

**Instruction Sheet  
for the PASCO  
Model ME-9869**

## **FAN ACCESSORY GUARD PACK (5) Installation Instructions**

### Introduction

The ME-9869 Fan Accessory Guard Pack provides the parts necessary for updating the ME-9491 Fan Accessory with a protective fan guard and to decrease its vibration on the Fan Cart.

### Equipment

#### Included equipment

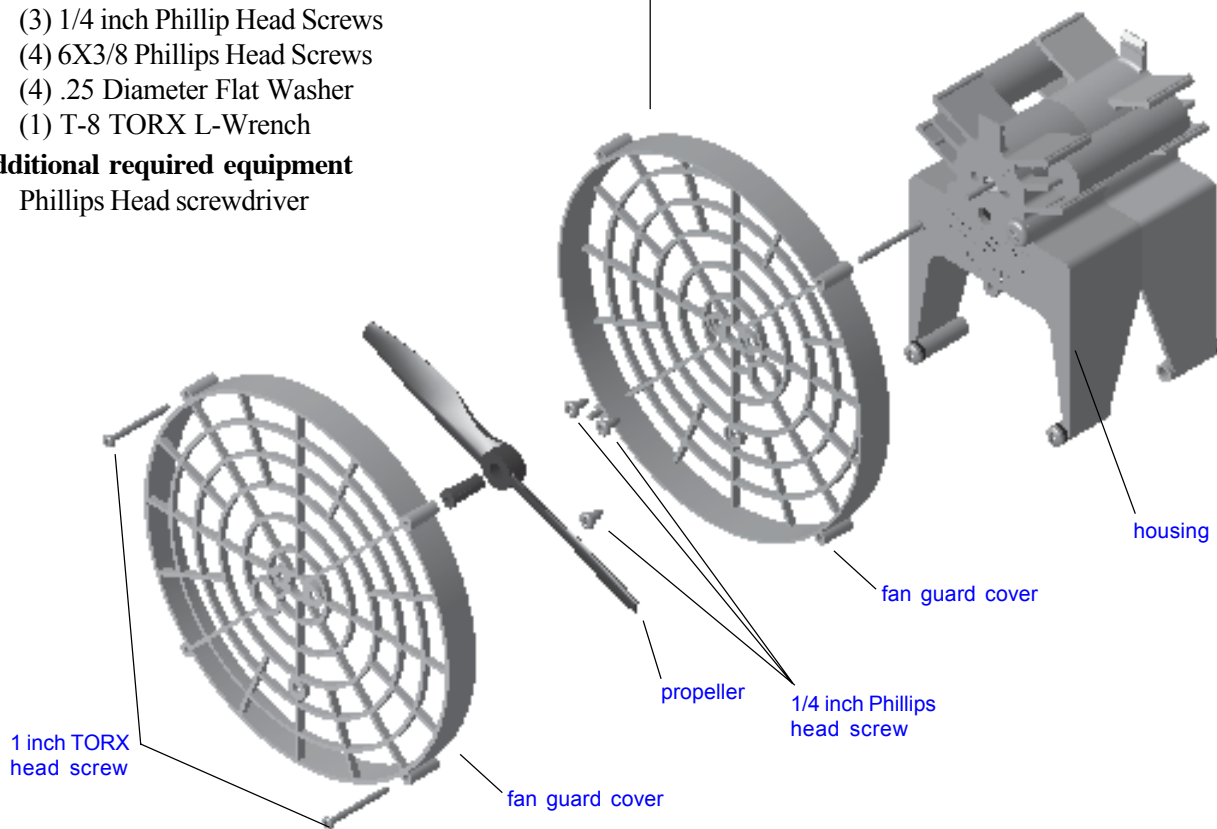
- (2) Fan Guard Covers
- (4) 1 inch TORX Head Screws
- (3) 1/4 inch Phillip Head Screws
- (4) 6X3/8 Phillips Head Screws
- (4) .25 Diameter Flat Washer
- (1) T-8 TORX L-Wrench

#### Additional required equipment

- Phillips Head screwdriver

### Attaching the Protective Fan Guard

1. The propeller / propeller bushing is press fit to the motor shaft of the ME-9491 Fan Accessory. Remove the propeller from the unit by pulling the propeller assembly straight from the main body.
2. Use the Phillips screwdriver to remove the two small screws located next to either side of the motor shaft. Be careful not to shake the housing. Discard these screws.



**Figure 1. Attaching the Fan Guard to the Fan Accessory**

© 2003 PASCO scientific

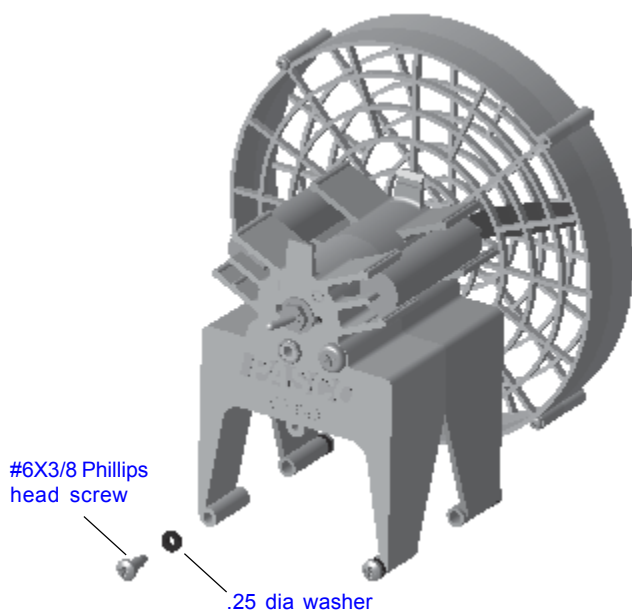
3. Place one fan guard cover onto the fan accessory. Align the holes of the fan guard cover with the corresponding holes on the fan accessory, as pictured and secure with the three 1/4 inch replacement screws.
- 4.. Press the propeller back onto the fan shaft.
5. Place the other fan guard cover onto the fan accessory.

► **Note:** The orientation of the large hole in this fan guard cover should be in the **lower left quadrant**.

6. Line up the four screw holes on the outer edge of the fan guard cover with the corresponding holes on the installed fan guard cover. Place two of the TORX screws into the holes that are indicated in the drawing and tighten with the T-8 TORX driver.
7. Place the remaining two TORX screws into the holes remaining in the opposite fan guard cover and tighten.

### Attaching the Washers

To reduce motor vibration, attach one washer to the outside of each leg of the fan cart accessory. Important: Tighten the screw until the outside edge of the washer is squeezed so tightly that it extends past the screw head.



**Figure 2. Attaching the Washers**

### Limited Warranty

PASCO scientific warrants the product to be free from defects in materials and workmanship for a period of one year from the date of shipment to the customer. PASCO will repair or replace at its option any part of the product which is deemed to be defective in material or workmanship. The warranty does not cover damage to the product caused by abuse or improper use. Determination of whether a product failure is the result of a manufacturing defect or improper use by the customer shall be made solely by PASCO scientific. Responsibility for the return of equipment for warranty repair belongs to the customer. Equipment must be properly packed to prevent damage and shipped postage or freight prepaid. (Damage caused by improper packing of the equipment for return shipment will not be covered by the warranty.) Shipping costs for returning the equipment after repair will be paid by PASCO scientific.

### Equipment Return

Should the product have to be returned to PASCO scientific for any reason, notify PASCO scientific by letter, phone, or fax BEFORE returning the product. Upon notification, the return authorization and shipping instructions will be promptly issued.

► **NOTE:** NO EQUIPMENT WILL BE ACCEPTED FOR RETURN WITHOUT AN AUTHORIZATION FROM PASCO.

When returning equipment for repair, the units must be packed properly. Carriers will not accept responsibility for damage caused by improper packing.

Address: PASCO scientific  
10101 Foothills Blvd.  
P.O. Box 619011  
Roseville, CA 95678-9011

Phone: (916) 786-3800  
FAX: (916) 786-3292  
email: techsupp@pasco.com  
web: www.pasco.com