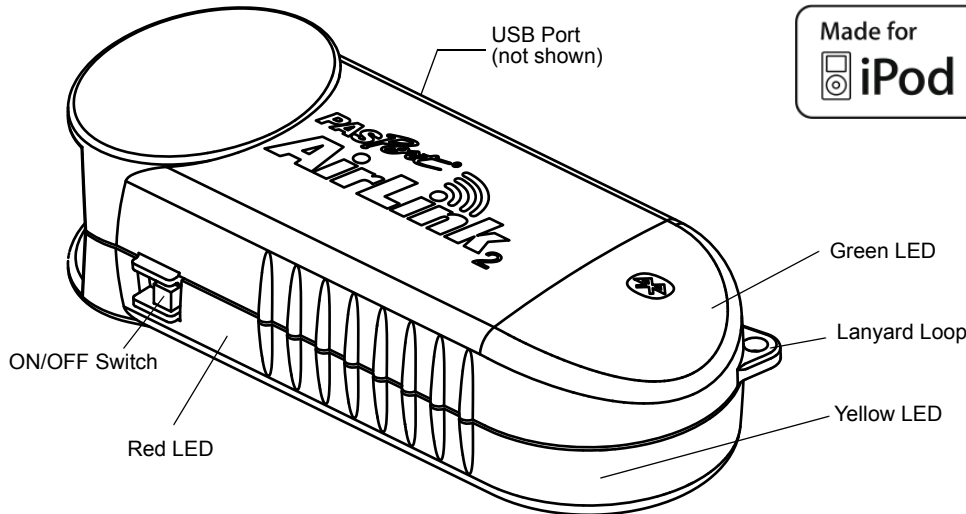




PASPORT AirLink₂

PS-2010



Equipment and Software

Included	Part Number
PASCO AirLink ₂ Sensor Interface	PS-2010
USB Cable* for GLX or SPARK Science Learning System	PS-2528 * not shown

Also Required	
PASPORT Sensor	see catalog or web site
and	
iPad or iPhone 3G or iPhone 3GS or iPod touch (2nd or 3rd generation)	see www.apple.com
SPARKvue app	see www.itunes.com/apps/
or	
DataStudio Software (1.9.8r9 or later)	see catalog or web site
Bluetooth compatible computer ¹	

Introduction

The PASPORT AirLink₂ is a sensor interface for PASPORT sensors that wirelessly connects to iPad™, iPhone® and iPod touch® devices and Macintosh® and Windows® com-

puters through Bluetooth™. The AirLink₂ uses a rechargeable lithium polymer (Li-Poly) battery (installed) and comes with a USB cable that allows the battery to be recharged while the AirLink₂ is connected to a computer's USB port or a USB power supply.

About the Manual

Part One of this manual describes how to use the AirLink₂ with the iPad, iPhone or iPod touch, including how to download and run the SPARKvue application on the iPad, iPhone or iPod touch. Part Two describes how to use the AirLink₂ sensor interface with a computer and the PASCO DataStudio program.

Bluetooth Requirements

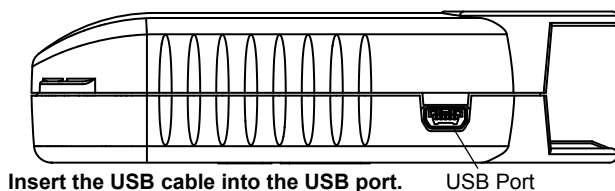
The iPad, iPhone and iPod touch are Bluetooth compatible. Consult your computer's documentation to determine if it is Bluetooth-capable. Your Macintosh computer must be running Mac OS X 10.2.1 or higher and your Windows computer must be running Windows XP with Service Pack 2 (SP2) or higher.

¹If your computer is not already Bluetooth capable, you may be able to add Bluetooth capability by purchasing a Bluetooth module that connects to a computer's USB port (such as the PASCO PS-2553 Bluetooth USB Adapter). When setting up a Windows computer with Bluetooth, it's best to try the default

drivers included with Windows XP (see the Bluetooth Device Control Panel). As an alternative, follow the installation instructions supplied with the Bluetooth module.

Powering the PASPORT AirLink₂

Use the USB cable to charge the battery in the PASPORT AirLink₂. To use the cable, insert the small end of the cable into the USB port on the side of the AirLink₂. Connect the large end of the cable to a USB port on a computer or USB power supply.



Note: Charge for at least four hours prior to first use.

The sensor interface will normally provide 4 to 6 hours of continuous data collection between charges depending on the power demand of the connected sensor and the sampling rate.

Maximizing Battery Life

The following are suggestions for maximizing battery life:

- Unplug the sensor when not making measurements.
- Use slow sample rates for long experiments.
- Turn off the AirLink₂ when not in use.
- Quit the data acquisition software between data collection episodes.

Remember to fully charge the AirLink₂ before using it for data collection in the field. The AirLink₂ may be left connected to its charger for an indefinite period of time without damage. Also, the Li-Poly battery exhibits very low self-discharge so it may be stored for many months with the AirLink₂ turned off while retaining most of its charge. If constant charging is not possible, always store the interface fully charged, recharging at least every three months.

Status LEDs for the PASPORT AirLink₂

The PASPORT AirLink₂ has internal light-emitting-diodes (LEDs) that are visible through the translucent case. A yellow LED shows the state of charge. The green LED shows the connection status. These two LEDs are near the front end of the sensor. A red LED located near the ON/OFF switch indicates battery charger status. Please refer to the table..

LED Color	Flashing	Solid
Yellow: State of charge.	Not applicable.	ON: Warning! Charge the battery soon (25% or less charge remaining). OFF: Battery is charged (25 to 100% charge remaining).
Green: Connect status.	Slow (about 1 Hz): Searching for a Bluetooth receiver. Fast (about 2 Hz): Connected and monitoring data.	ON: AirLink ₂ is on and connected to an iPhone/iPod or computer. OFF: Battery is completely discharged.
Red: Battery charger status.	Slow: Battery temperature too high or too low for charging. Fast: Bad battery.	ON: Battery is charging. OFF: Battery is charged (if USB cable is connected to the computer).

Note: The rechargeable battery cannot be replaced by the end-user. Please contact PASCO if your battery is not charging properly.

Part One: Using the AirLink₂ with the iPad, iPhone or iPod touch

Your iPad, iPhone or iPod touch must be running iPhone OS 3.1 Software or later and the latest version of the SPARKvue app. Use iTunes® to download the SPARKvue app from the App Store (www.itunes.com/apps). See the Apple web site at www.apple.com/Downloads for the iPad, iPhone and iPod touch OS software and the iTunes application.

Because the AirLink₂ sensor interface communicates with the iPad, iPhone or iPod touch wirelessly, it does not physically connect to the device. Instead, you set up a wireless connection from the device to the AirLink₂ using the Settings app.

You can connect to only one AirLink₂ at a time. Once you connect to a specific AirLink₂, no one else can access that AirLink₂. Depending on the environment, the AirLink₂ must remain within 30 feet (10 meters) of the device that you intend to use. Actual range may vary.

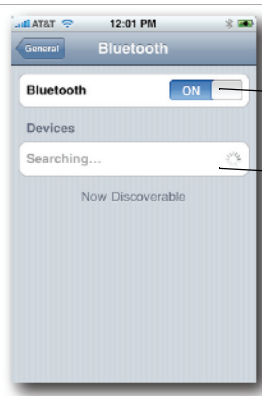
Setting Up the iPad, iPhone or iPod touch

Note: Each PASPORT AirLink₂ has an identification number (e.g., AirLink2-12345), that is printed on a label on the bottom of the AirLink₂. Use this ID number to confirm that your AirLink₂ is communicating with the iPad, iPhone or iPod touch when setting up and connecting.

- Step 1: Turn on the AirLink₂ unit (the green LED should flash, which indicates that the AirLink₂ is searching for a Bluetooth receiver). Make sure that the iPad, iPhone or iPod touch is on.
- Step 2: In the Home screen, launch the Settings app and, within Settings, go to General>Bluetooth.



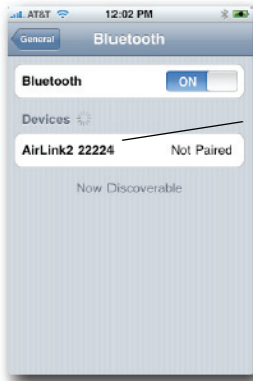
Launch the Settings app



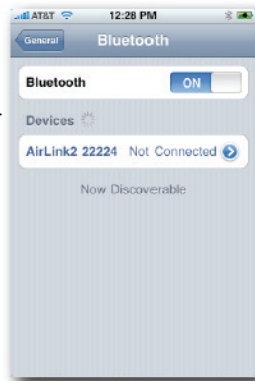
Make sure that Bluetooth is turned ON.

Bluetooth searches for any active devices, including the PASPORT AirLink₂.

- Step 3: In the Bluetooth screen, you should see something very much like one of these two images. In the first case, the device and AirLink₂ need to be “paired”. Tap “Not Paired” to establish a pairing. In the second case, the device and AirLink₂ have been paired, but are not currently connected. Tap “Not Connected” to establish a connection.



AirLink₂ ID number

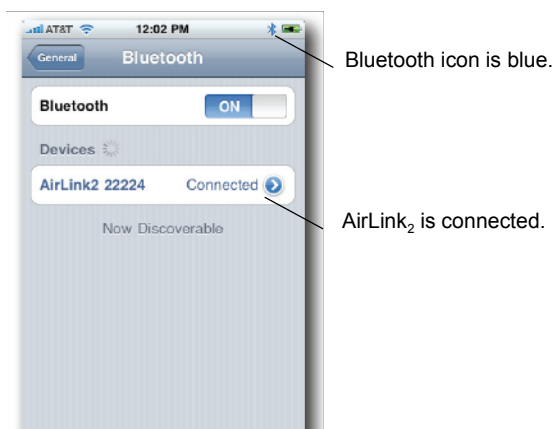


- NOTE: In a classroom situation, there may be many AirLink₂ devices available for pairing. To make sure that you are pairing with the right device, check the back of the AirLink₂ for its identification number.

- Step 4 (only if the devices had not already been paired): An alert window will appear after you tap “Not Paired”. Tap “Pair” to complete pairing and connect the devices. The iPad, iPhone or iPod device and the AirLink₂ need only be paired once.



- Step 5: The screen should show that the AirLink₂ is connected. The green LED on the AirLink₂ should be ON. The Bluetooth icon in the upper right corner of the device should be blue, indicating an active connection.
- Step 6: Exit the Settings app, return to the SPARKvue app, connect a PASPORT sensor to the AirLink₂, and start collecting data.



Part Two: Using the PASPORT AirLink₂ with a Computer

Because the AirLink₂ communicates with the computer wirelessly, it does not physically connect to the computer. Instead, you set up a wireless connection from the computer to the AirLink₂ in software.

You can connect to only one AirLink₂ at a time. Once you connect to an AirLink₂, no one else can access that AirLink₂. Depending on the environment, the AirLink₂ must remain within 30 feet (10 meters) of the computer you intend to use. Actual range may vary.

Setting Up the Computer with Bluetooth.

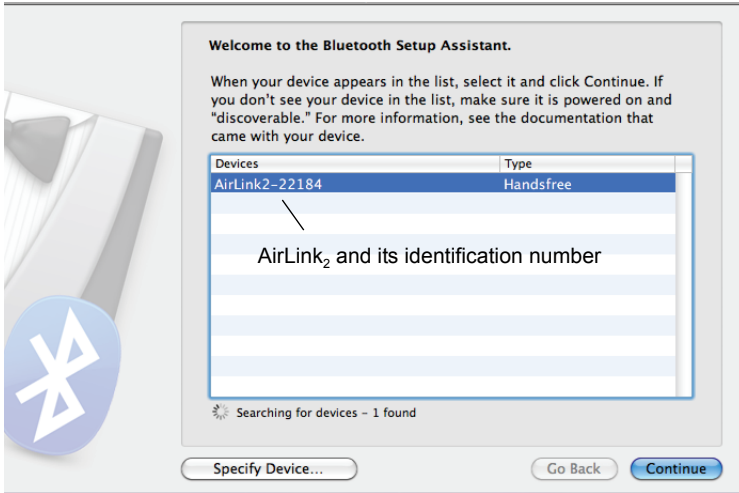
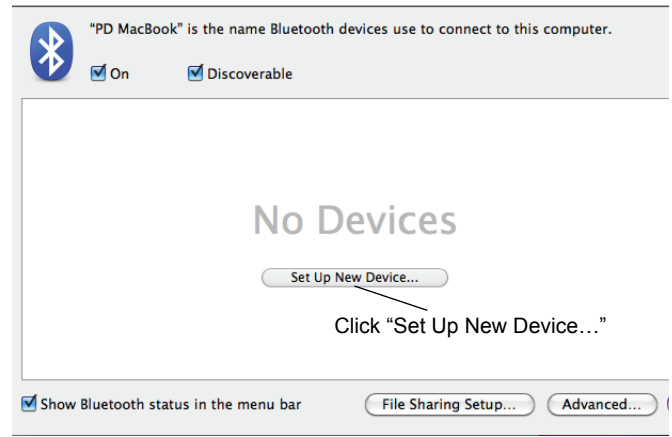
- The AirLink₂ requires DataStudio version 1.9.9 or higher (see the PASCO web site at www.pasco.com).
- Position the AirLink₂ ON/OFF switch to ON. The green LED will blink slowly (about 1 Hz) when the AirLink₂ is on.



Note: Each PASPORT AirLink₂ has an identification number (for example, AirLink2-00056), that is printed on a label on the bottom of the AirLink₂. Use this ID number to select the AirLink₂ in the DataStudio software when setting up and connecting

Macintosh OS X Bluetooth Setup

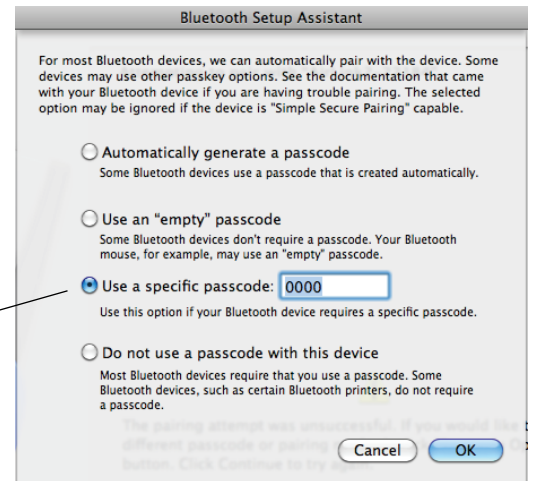
- Mac OS X 10.6**
 In System Preferences, click Bluetooth. Make sure that Bluetooth is “On” and “Discoverable”. In the preference pane, click “Set Up New Device...”. The Bluetooth Setup Assistant window will open.
- In the Bluetooth Setup Assistant window, the AirLink₂ and its identification number should appear in the list of “Devices”. Click “Continue”.



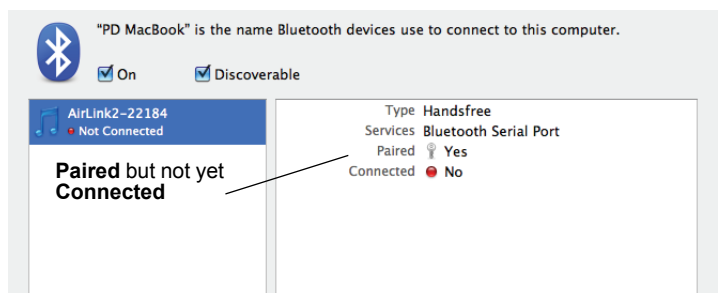
- In the Bluetooth Setup Assistant window that opens, select “Use a specific passcode” and type in **1234**. Click “Continue”.
- The final window should state that the computer and AirLink₂ are successfully paired. Click “Quit” to close the Bluetooth Setup Assistant.



Enter **1234** as the specific passcode.

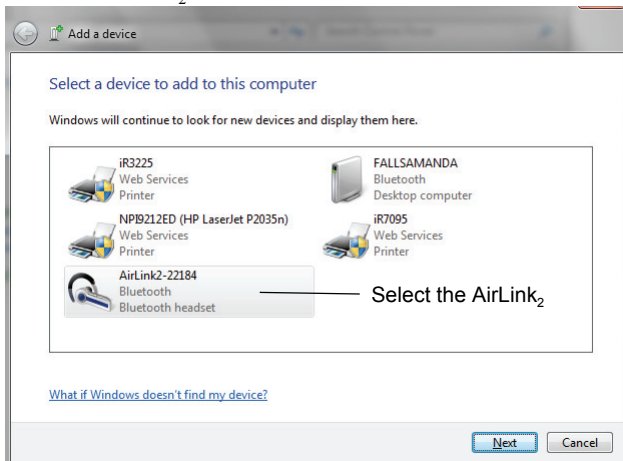
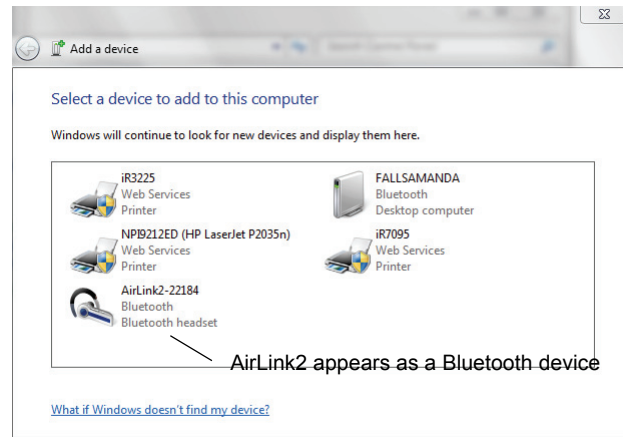


- In the Bluetooth preference pane (under System Preferences), the AirLink₂ will be “Paired”, but it will not be “Connected” until you start DataStudio and choose the AirLink₂ as the interface that you want to use. See “Connecting the PASPORT AirLink₂ with DataStudio” in a later section of this manual.

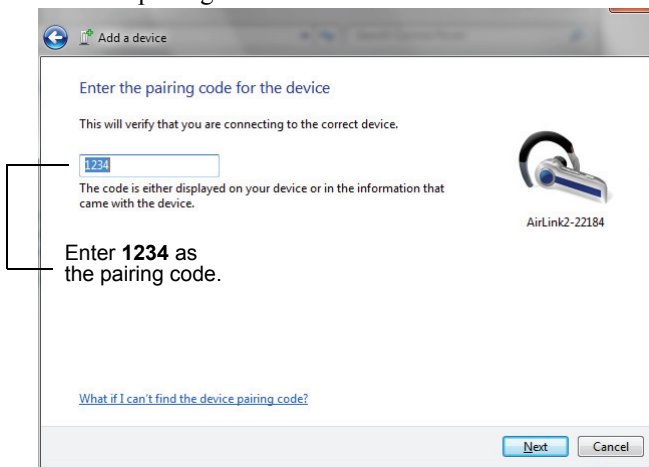
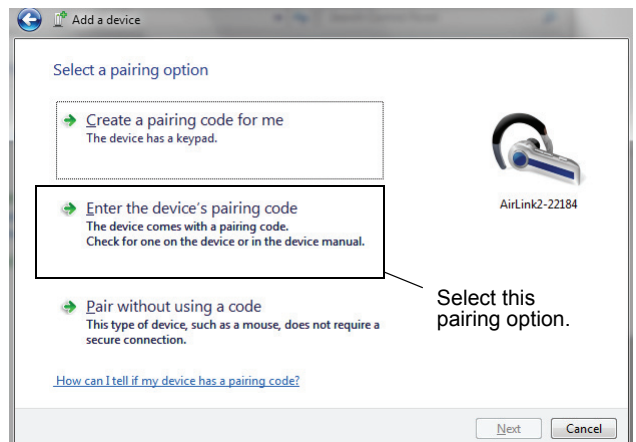


Windows 7

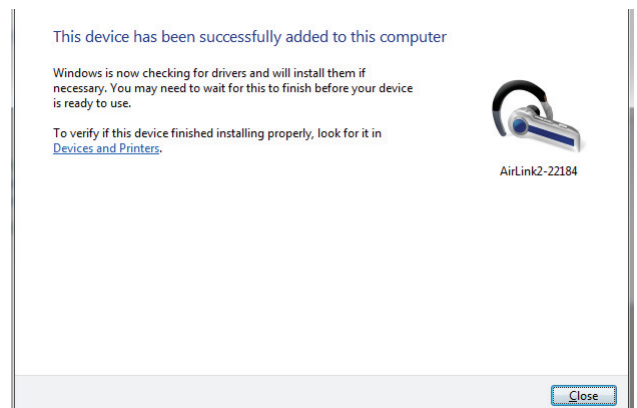
- If your computer is not yet Bluetooth compatible, see your system's documentation about setting up a Bluetooth transceiver on your computer
- In the Start Menu under Control Panels, select “Devices and Printers”. The AirLink2 should appear in the “Add a device” window as a Bluetooth device.
- Select “AirLink₂” and then click “Next”.



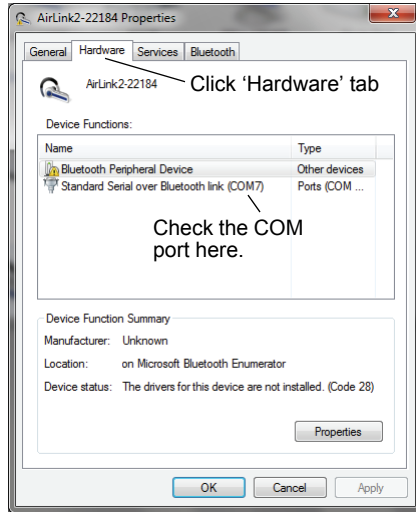
- Select the following pairing option in the next window: “Enter the device’s pairing code”, and click “Next”.
- Enter the pairing code “1234” and click “Next”.



- The next window should explain that the device (AirLink₂) has been successfully added to the computer. Click “Close”.

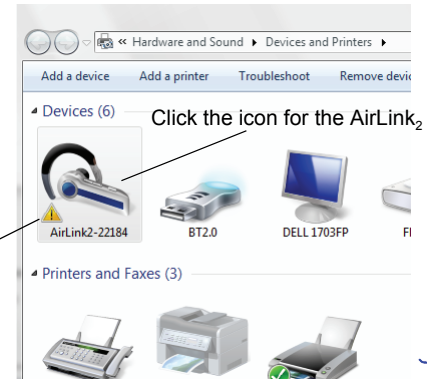


- Find the AirLink₂'s "COM" port before using the AirLink₂ with DataStudio. Go to the Devices and Printers control panel. Click the icon for the AirLink₂ to open the AirLink₂ Properties window.
- In the AirLink₂ Properties window, click the "Hardware" tab. Under "Device Functions", check the "COM" port for the "Standard Serial over Bluetooth link". In this example, it is COM7. Click "OK" to close the window.



AirLink₂ is "paired" but not yet "connected".

Make a note of the Outgoing COM port number. You will need it when you connect the AirLink₂ with the DataStudio software.



- The AirLink₂ will be "Paired", but not yet "Connected" until you start DataStudio and choose the AirLink₂ as the interface that you want to use. See "Connecting the PASPORT AirLink₂ with DataStudio" in a later section of this manual.

Windows Vista

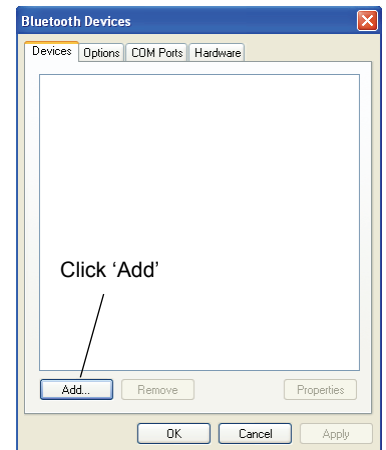
- See your system's documentation (e.g., "Help->Help and Support Center") for setting up a Bluetooth connection.

Windows XP (SP2)

- From the Start menu, open the Bluetooth Devices Control Panel to add the PASPORT AirLink₂. In the Bluetooth Devices control panel under the "Devices" tab, click "Add" to open the "Add Bluetooth Device Wizard".

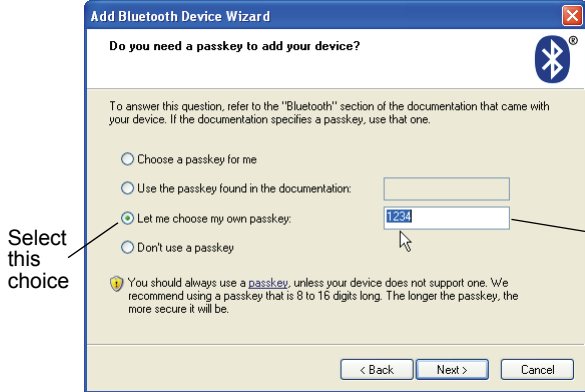
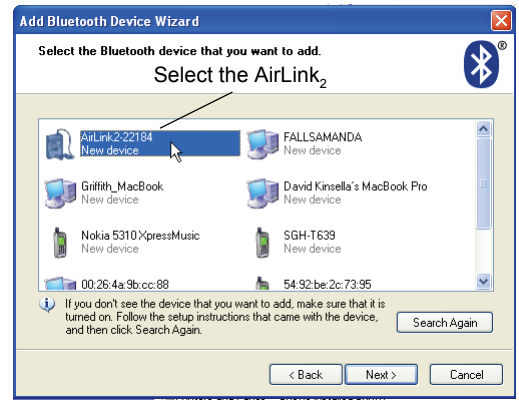


Click 'My device is set up and ready to be found'



- Click the checkbox for 'My device is set up and ready to be found', and then click 'Next'.

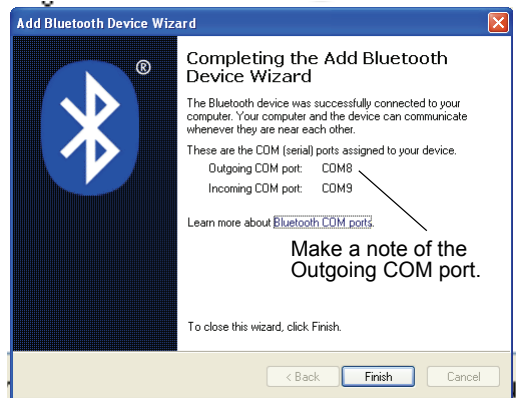
- The Add Bluetooth Device Wizard shows the available Bluetooth devices.. Select the AirLink₂ from the list of Bluetooth devices and click ‘Next’.
- When the Device Wizard asks for a passkey, check “Let me choose my own passkey”, click “Next”, and enter **1234** Once again, click “Next”.



Enter 1234 as the passkey

Select this choice

- When the ‘Add Bluetooth Device Wizard’ is finished, make a note of the Outgoing COM port number for the AirLink₂ shown in the Add Bluetooth Device Wizard. You will need to enter the Outgoing COM port number in the DataStudio ‘Choose Interface’ dialog (see below). Click “Finish”.

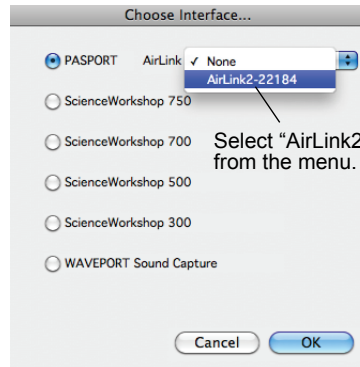


Connecting to the PASPORT AirLink₂ with DataStudio

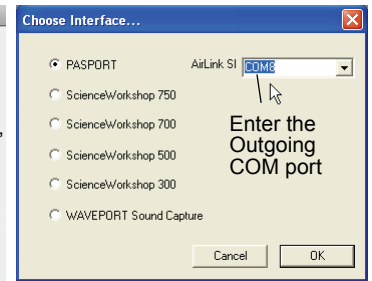
1. Start DataStudio and click the 'Setup' button on the DataStudio toolbar. In the Experiment Setup window, select "Choose Interface". Choose PASPORT as the interface and select your PASPORT AirLink₂ from the AirLink drop-down list.

- Macintosh
Choose "AirLink2" from the drop-down menu..
- Windows
Enter the Outgoing COM port number (e.g., COM8 with no spaces) for the AirLink₂ in the field to the right of AirLink₂.

2. Click "OK" to return to the Experiment Setup window.



Macintosh



Windows

Automatic PASPORT AirLink₂ Connection

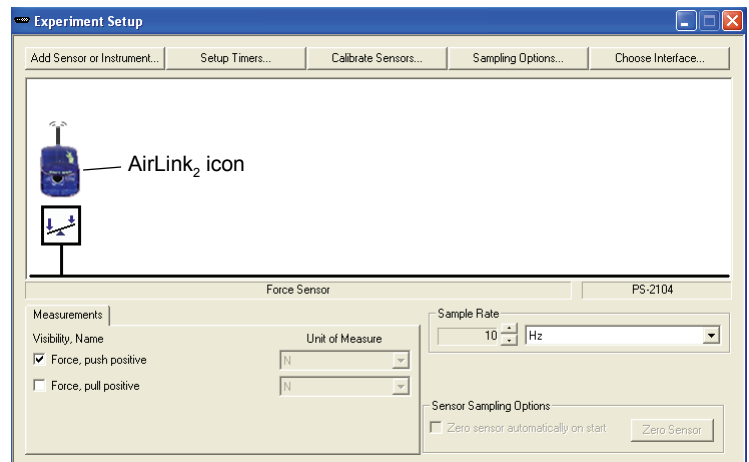
Each time DataStudio is launched, or a new experiment is created, DataStudio will attempt to re-connect to the last selected PASPORT AirLink₂. If a connection is not established when expected, choose **File->New Experiment** to create a new experiment and re-attempt a connection.

When a AirLink₂ is connected, its icon will appear in the Experiment Setup window (click the **Setup** button on the DataStudio toolbar). If no AirLink₂ appears in the Experiment Setup window, choose **File->New Experiment** a couple of times and then check the Experiment Setup window for a connection. If this does not result in a connection, check the settings in the **Experiment>Choose Interface** dialog and then check the computer's Bluetooth preference pane or control panel.

Changing PASPORT AirLink₂ Connections

Do one of the following:

- Click the **Setup** button on the DataStudio toolbar and select **Choose Interface**
- From the **Experiment** menu click **Change Interface**. Choose a different AirLink₂ from the popup menu (Macintosh) or enter a different COM port number without spaces (Windows).



Disabling PASPORT AirLink₂ Connections

In the **Choose Interface** dialog, either choose a non-PASPORT interface, or choose 'None' from the AirLink₂ menu. To re-enable a connection for future experiments, follow the instructions under **Selecting a PASPORT AirLink₂ for use with DataStudio** in this instruction sheet.

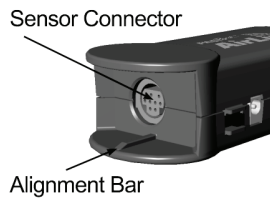
Out of Range or Turned Off During Sampling

If the connection is lost during sampling, DataStudio will stop recording data, and an error dialog will be displayed. Get back in range, or check if the AirLink₂ is powered on (see Status LEDs PASPORT AirLink₂), and try to re-connect. A connection can always be established later by creating a new experiment, or following the instructions under **Selecting a PASPORT AirLink₂**.

Connecting PASPORT Sensors

The DataStudio software and the SPARKvue app for iPhone and iPod touch automatically recognize a PASPORT sensor when it is plugged into the PASPORT AirLink₂. The program or app will set the calibration(s) and sampling rate to the sensor's defaults.

Plugging in a Sensor



Align the alignment bar on the end of the PASPORT AirLink₂ with the groove on the sensor or sensor plug. Plug the sensor or sensor plug into the mini DIN sensor connector on the end of the sensor interface.

Specifications

Compatibility	iPad, iPhone 3G and iPod touch (2nd or 3rd generation) devices and Windows and Macintosh computers with Bluetooth support
Wireless Range	10 meters
Sampling Rate	Up to 1,000 hertz (1 kHz) (varies by software application and sensor)
Battery	4 hours to fully charge; 4 to 6 hours continuous collection per charge

Troubleshooting

Problem	Solution
AirLink ₂ drops connection	<ol style="list-style-type: none"> 1. You may be out of range. Move the device closer to the AirLink₂ and try to reconnect. 2. Battery may be low. Recharge.
Software does not see AirLink ₂	<ol style="list-style-type: none"> 1. Check AirLink₂ is powered on; 2. Confirm AirLink₂ is within range; 3. Make sure AirLink₂ isn't already connected to another device (see Status LEDs table). 4. (Windows) Ensure the COM port in the DataStudio Setup window matches the COM port your computer designated for the AirLink₂.
Software does not see sensor attached to AirLink ₂	<ol style="list-style-type: none"> 1. Confirm you are connected to AirLink₂; 2. Make sure sensor is firmly connected to AirLink₂; 3. Turn interface off and back on. (You will need to reconnect).

Technical Support

Before you call PASCO technical support, have the apparatus and this user's guide available. Please note the following:

- DataStudio version;
- Product name and model number;
- Approximate age of the product;
- Detailed description of the problem/sequence of events required to duplicate the problem.

For assistance with any PASCO product, contact PASCO at:

Address: PASCO scientific
10101 Foothills Blvd.
Roseville, CA 95747-7100

Phone: 916-786-3800 (worldwide)
800-772-8700 (U.S)

Fax: (916) 786-7565

Web: www.pasco.com

Email: support@pasco.com

Communications Regulation Information

The PASPORT AirLink₂ (PS-2010) complies with part 15 of the FCC rules. Operation is subject to the following two conditions: (1) The AirLink₂ may not cause harmful interference, and (2) the AirLink₂ must accept any interference received, including interference that may cause undesired operation. See instructions below if interference to radio and television reception is suspected.

IMPORTANT NOTE:

To comply with FCC RF exposure compliance requirements, the antenna used for this transmitter must not be co-located or operating in conjunction with any other antenna or transmitter. .



Radio and Television Interference

The equipment described in this manual generates, uses, and can radiate radio-frequency energy. If it is not installed and used properly—that is, in strict accordance with instructions from PASCO scientific, it may cause interference with radio and television reception.

The AirLink₂ has been tested and found to comply with the limits for a Class B digital device in accordance with the specifications in Part 15 of the FCC rules. These specifications are designed to provide reasonable protection against such interference in a residential installation. However, there is no guarantee that interference will not occur in a particular installation.

You can determine whether the AirLink₂ is causing interference by disconnecting it from the computer. If the interference stops, it was probably caused by the AirLink₂.

If the AirLink₂ does cause interference to radio or television reception, try to correct the interference by using one or more of the following remedies:

- Turn the television or radio antenna until the interference stops;
- Move the AirLink₂ to one side or the other of the device;
- Move the AirLink₂ further from the television or radio.

If these remedies do not correct the problem, consult with an experienced radio or television technician for additional suggestions.

Important: Changes or modifications to the AirLink₂ not authorized by PASCO scientific. could void the FCC Certification and negate your authority to operate the product. Responsible party (FCC matters only): David Stogner, PASCO scientific, 10101 Foothills Blvd., Roseville, CA, USA, 95747-7100.

High Risk Activities Warning

Connect only approved sensors to the AirLink₂. Connecting unapproved devices could void your warranty or result in shock or injury. Be sure to follow the sensor usage guidelines.

iPod touch, iPhone and iPad

“Made for iPod”, “Made for iPhone” and “Made for iPad” means that an electronic accessory has been designed to connect specifically to iPod,

iPhone, or iPad, respectively, and has been certified by the developer to meet Apple performance standards. Apple is not responsible for the operation of this device or its compliance with safety and regulatory standards.

Limited Warranty

PASCO scientific warrants the product to be free from defects in materials and workmanship for a period of one year from the date of shipment to the customer. PASCO will repair or replace, at its option, any part of the product, which is deemed to be defective in material or workmanship. The warranty does not cover damage to the product caused by abuse or improper use. Determination of whether a product failure is the result of a manufacturing defect or improper use by the customer shall be made solely by PASCO scientific. Responsibility for the return of equipment for warranty repair belongs to the customer. Equipment must be properly packed to prevent damage and shipped postage or freight prepaid. (Damaged caused by improper packing of the equipment for return shipment will not be covered by the warranty.) Shipping costs for returning the equipment after repair will be paid by PASCO scientific.

Copyright

The PASCO scientific 012-11114B *PASPORT AirLink₂ Instruction Manual* is copyrighted with all rights reserved. Permission is granted to non-profit educational institutions for reproduction of any part of this manual, providing the reproductions are used only in their laboratories and classrooms, and are not sold for profit. Reproduction under any other circumstances, without the written consent of PASCO scientific, is prohibited.

Trademarks

PASCO, PASCO scientific, DataStudio, ImagiProbe, PASPORT, and ScienceWorkshop are trademarks or registered trademarks of PASCO scientific, in the United States and/or in other countries. iPhone and iPod touch are trademarks of Apple Inc., registered in the U.S. and other countries. iPad is a trademark of Apple Inc. All other brands, products, or service names are or may be trademarks or service marks of, and are used to identify, products or services of, their respective owners. For more information visit www.pasco.com/legal.

Product End of Life Disposal Instructions:

This electronic product is subject to disposal and recycling regulations that vary by country and region. It is your responsibility to recycle your electronic equipment per your local environmental laws and regulations to ensure that it will be recycled in a manner that protects human health and the environment. To find out where you can drop off your waste equipment for recycling, please contact your local waste recycle/disposal service, or the place where you purchased the product.

The European Union WEEE (Waste Electronic and Electrical Equipment) symbol (to the right) and on the product or its packaging indicates that this product **must not** be disposed of in a standard waste container.



Battery Disposal Instructions:

Battery Disposal - Batteries contain chemicals that, if released, may affect the environment and human health. Batteries should be collected separately for recycling, and recycled at a hazardous material disposal location adhering to your country and local government regulations. To find out where you can drop off your waste battery for recycling, please contact your local waste disposal service or the product representative.

The battery or batteries included in this product or purchased in the European Union (if batteries not included) are marked with the European Union symbol for waste batteries (above) to indicate the need for the separate collection and recycling. For small batteries, the symbol is printed on the packaging.